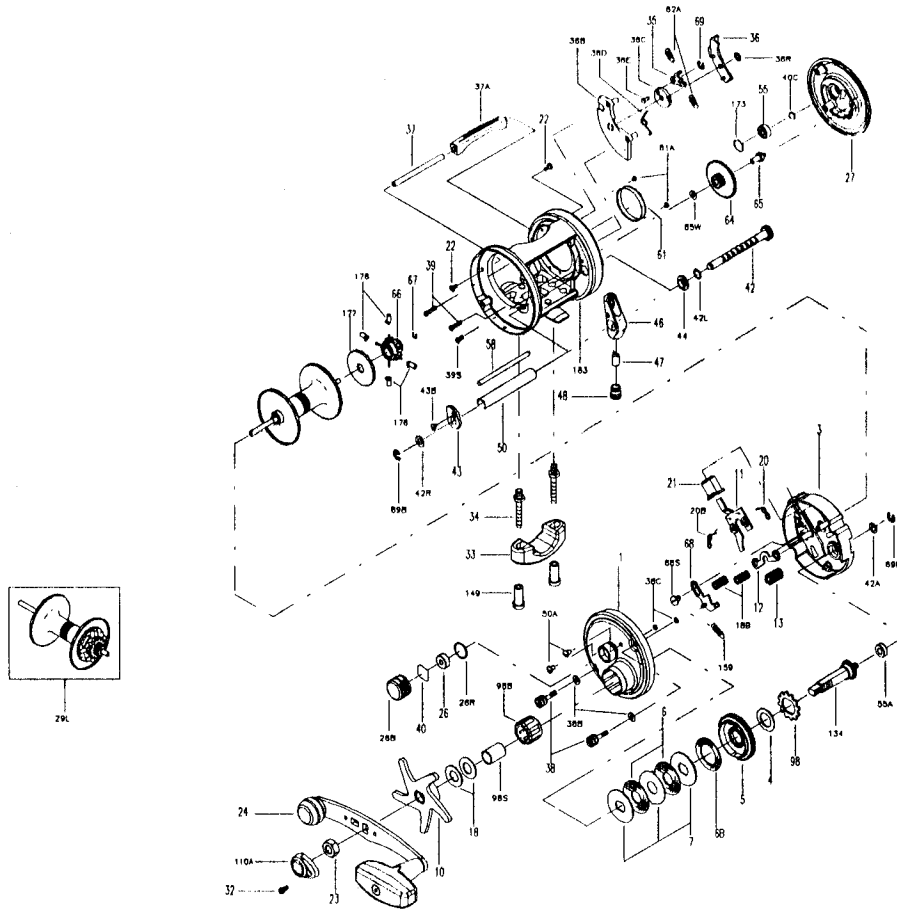




PARTS AND PRICE LIST FOR MODEL 975



Key No.	Part No.	Description	Price	Key No.	Part No.	Description	Price
1	001 975	Right Side Plate	\$19.00	39S	039S965	L.S. Plate Short Screw	\$.4
3	003 975	Inner R.S. Plate	11.25	40	040C965	Metal Thrust Washer	.5
4	004 060	Fibre Washer	.45	40C	040C310	Metal Thrust Washer	.4
5	005 975	Main Gear	8.00	42	042 975	Worm Shaft	5.1
6	006 309	Drag Washer HT-100 (2 req.)	.90	42A	042R965	Metal Washer	.5
6B	006B965	Drag Washer HT-100	.75	42L	042L965	L.S. Worm Shaft Washer	.5
7	007C965	Metal Drag Washer (Set of 3)	3.00	42R	042R965	R.S. Worm Shaft Washer	.5
8	008 060	Star Tension Washer	.50	43	043 965	R.S. Worm Shaft Bushing	1.5
10	010 975	Star Drag	6.75	43B	043B965	Worm Bushing Screw	.5
11	011 975	Eccentric Jack	1.25	44	044 975	L.S. Worm Shaft Washer	1.5
12	012 965	Yoke	1.00	46	046 965	Line Guide	3.0
13	013 975	Pinion	6.25	47	047 975	Pawl	1.3
18	018 975	Disc Clutch Spring (2 req.)	.80	48	048 965	Pawl Cover Screw	.7
18B	018B975	Yoke Spring (2 req.)	.45	50	050 975	Worm Shield	2.5
20	020 965	R.S. Jack Spring	.50	50A	050 716	R.S. Plate Screw (2 req.)	.4
20B	020B965	L.S. Jack Spring	.75	55	055 113H	Ball Bearing (2 req.)	9.0
21	021 975	Clutch Release Button	1.60	55A	055A965	Gear Stud Bushing	2.5
22	050 716	Post Screw (2 req.)	.45	58	058 975	Line Guide Post	1.8
23	023 555	Handle Nut	1.15	61	061 965	Brake Drum	2.0
24	024 975	Handle Assembly	8.50	61A	043B965	Brake Drum Screw (2 req.)	.5
26B	026B965	Spool Tension Cap	1.50	62A	062A965	Click Spring (2 req.)	1.5
26R	026R965	Tension Cap 'O' Ring	.50	64	064 975	Idler Gear	1.7
27	027 975	Left Side Plate	19.00	65	065 965	Idler Gear Pin	1.5
29L	029L975	Spool Assembly	23.00	65W	065W965	Idler Gear Washer	.5
32	032 015	Handle Cap Screw	.40	66	066M965	Spool Gear Click Ratchet	4.1
33	033 113	Rod Clamp	4.00	67	067 016S	Lock Ring	.5
34	034 975	Rod Clamp Screw (2 req.)	1.75	68	068 965	Shift Arm	1.5
35	035 965	Click Tongue	1.00	68S	068S965	Shift Arm Screw	1.5
36	036 975	Click Button	1.50	69B	069B600	Retaining Ring (2 req.)	.9
36B	036B975	Click Housing	1.55	98	098 965	Trip Ratchet	.6
36C	036C965	Click Wheel	1.50	98B	098B525	Roller Bearing	10.3
36D	036D965	Click Wheel Spring	.50	98S	098S525	Bearing Clutch Shaft	2.5
36E	036E965	Click Tongue Pin	.60	110A	110A555	Handle Nut Cap	.7
36R	069B050	Retaining Ring (2 req.)	.80	134	134 975	Gear Stud	6.5
37	037 975	Thumb Bar Post	2.50	149	149 045	Rod Clamp Nut (2 req.)	1.0
37A	037A975	Thumb Bar	1.65	159	159 965	Shift Arm Spring	.8
38	038N965	Take-Apart Screw (2 req.)	1.50	173	173 965	L.S. Bearing Retainer	.8
38B	038BN965	Side Plate Washer (2 req.)	.50	176	176 965	Anti-Backlash Brakes (4 req.)	.8
38C	038CN965	Screw 'O' Ring (2 req.)	.50	177	177 965	Brake Selection Knob	1.5
39	039 965	L.S. Plate Screw (2 req.)	.40	183	183 975	Frame Assembly	90.0